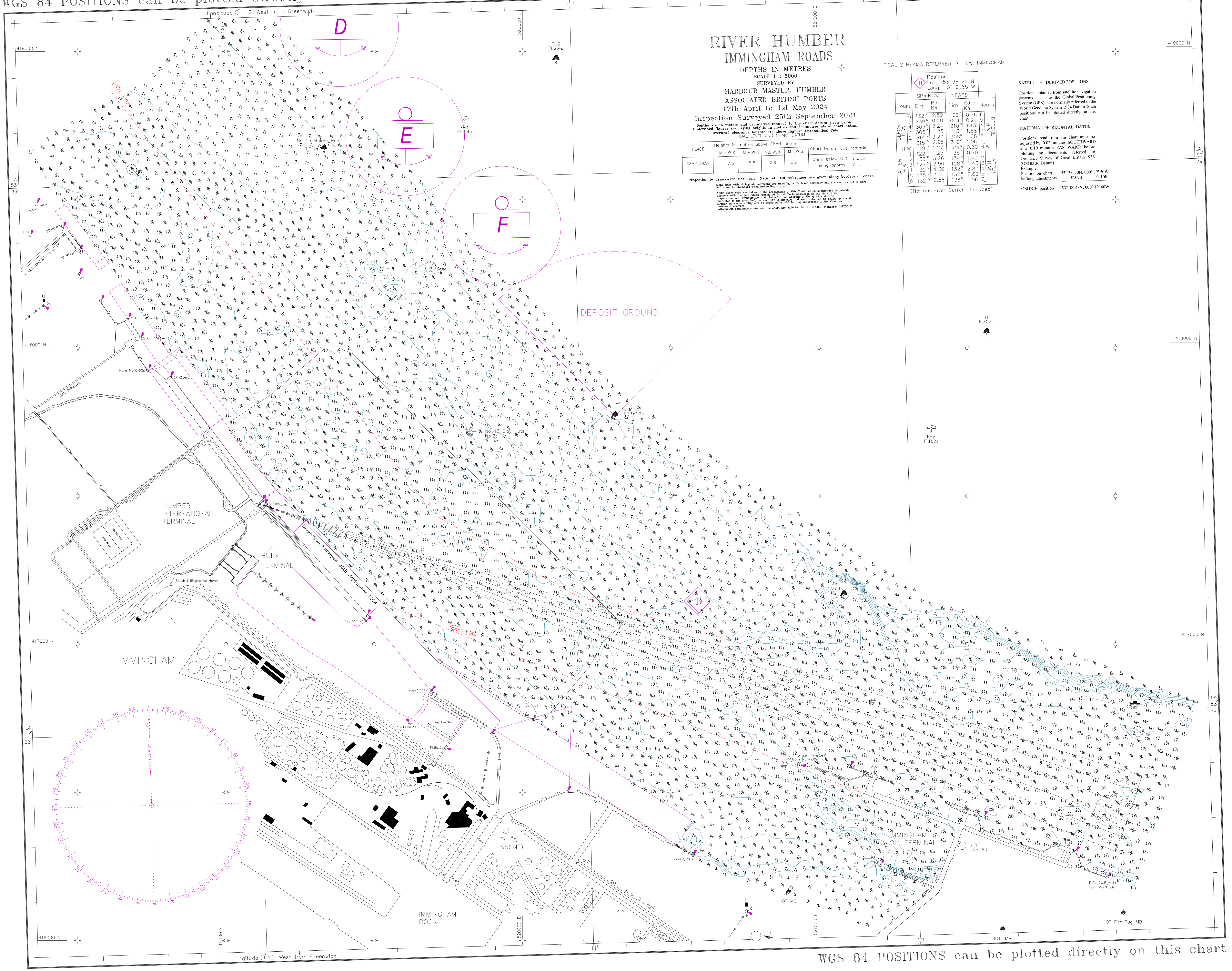


WGS 84 POSITIONS can be plotted directly on this chart

© Copyright 2024. All rights reserved. No part of this product may be reproduced in any form (including photocopying or by electronic means) without prior permission.



RIVER HUMBER IMMINGHAM ROADS

DEPTHS IN METRES
SCALE 1 : 5000

SURVEYED BY
HARBOUR MASTER, HUMBER
ASSOCIATED BRITISH PORTS
17th April to 1st May 2024

Inspection Surveyed 25th September 2024
Depths are in metres and decimetres reduced to the chart datum given below
Underlined figures are drying heights in metres and decimetres above chart datum
Overhead clearance heights are above Highest Astronomical Tide
TIDAL LEVEL AND CHART DATUM

PLACE	Heights in metres above Chart Datum				Chart Datum and remarks
	M.H.W.S.	M.H.W.N.	M.L.W.N.	M.L.W.S.	
IMMINGHAM	7.3	5.8	2.6	0.9	3.9m below O.D. Newlyn Being approx. L.A.T.

Projection -- Transverse Mercator. National Grid references are given along borders of chart.
Light state without legends represent the light displayed vertically and are seen as red to port and green to starboard when proceeding upriver.
While every care was taken in the preparation of this chart, which is intended to provide accurate information, the user of the chart is advised to verify the accuracy of the information shown on the chart by independent means. The user of the chart is advised to verify the accuracy of the information shown on the chart by independent means. The user of the chart is advised to verify the accuracy of the information shown on the chart by independent means.

TIDAL STREAMS REFERRED TO H.W. IMMINGHAM

Hours	SPRINGS		NEAPS		Hours	
	Dirn	Rate Kn	Dirn	Rate Kn		
BEFORE	6	1.32	2.59	106	0.76	6
	5	2.59	0.20	0.04	0.21	5
	4	3.05	2.24	3.10	1.13	4
	3	3.05	3.25	3.13	1.68	3
	2	3.14	3.23	3.08	1.68	2
	1	3.15	2.95	3.19	1.06	1
AFTER	H.W.	3.19	1.27	3.41	0.30	H.W.
		1.22	1.25	1.35	0.70	
		1.33	3.26	1.34	1.40	
		1.23	3.96	1.28	2.43	
		1.32	4.36	1.32	2.83	
		1.35	3.50	1.35	2.62	
		1.32	2.86	1.36	1.56	

(Normal River Current Included)

SATELLITE - DERIVED POSITIONS
Positions obtained from satellite navigation systems, such as the Global Positioning System (GPS), are normally referred to the World Geodetic System 1984 Datum. Such positions can be plotted directly on this chart.

NATIONAL HORIZONTAL DATUM
Positions read from this chart must be adjusted by 0.02 minutes SOUTHWARD and 0.10 minutes EASTWARD before plotting on documents referred to Ordnance Survey of Great Britain 1936 (OSGB 36 Datum).

Example:
Position on chart 53° 38' 50N, 000° 12' 50W
lat/long adjustments 0.02S 0.10E
OSGB 36 position 53° 38' 48N, 000° 12' 40W

WGS 84 POSITIONS can be plotted directly on this chart